

FOR SALE

2006 Coachmen Freedom Ramp & Camp Garage/Toy Hauler -295TH



RV Type: Class C
Year: 2006
Make: Coachmen
Model: Freedom Ramp & Camp – Model 295TH
Length: 29.50
Miles: 47,535
Price: \$36,000 (*accepting offers*)
New/Used: Pre-owned
Chassis: Ford E-450
Sleeps: 6-8
Air: 2 Manual Roof Top Duo-Therm
VIN #: 1FDXE45S65HA76764
Generator: Generac 3600KW (30amp)
Generator: Hrs: 664.5



Unit Info

- Ford E450 Triton 6.8L V10, Automatic Transmission with Towing Package
- Power Locks and Windows
- New Tires April 2010 (Michelin LTX M/S, LT 225/75 R16 Load Range E)
- Jenson AM/FM/CD Stereo in Cab and runs into Living Quarter Cabin
- Truck Length 29.6Ft Bumper to Bumper
- 55 Gallon Fuel Tank
- Class 3 Receiver Hitch
- Rear Leveling/Stabilizer Jacks (Manual)
- Two (2) Manual Roof Top Dometic Duo Therm A/C's 13,500 BTU (*\$1,000.00 Extra Added Value*)
- 30,000 BTU Hydro Flame Propane Furnace with living quarter Thermostat Control
- Samsung Microwave Oven
- Maytag 3 Burner Propane Cooktop Stove
- 8cu. Ft. Dometic Refrigerator (electric with propane backup)

- Super-king size bunk over cab
- Jack knife sofa (makes down to double size bed)
- Fold-down dinette seats 4 (makes down to single size bed)
- Separate Room for Toilet and Shower with Skylight in Shower
- 21" Samsung Flat Screen Television with Digital Converter Box and manual crank TV Antenna
- 10' Manual A&E Awning
- Remote Controlled Spotlight on Rear
- Built-In 80psi Air Compressor
- Rubber Coin Floor in Garage with Adjustable Vehicle I-Track Tie-Down Rails
- Full sized Fold-Down bed and wardrobe with drawer storage in garage
- Left and Right Side Entry Garage Doors with ATV Ramps
- 55 Amp Converter

Tanks Sizes

- 20.3 Gallon LP Tank
- 27.5 Gallon Fresh Tank
- 28 Gallon Grey Tank
- 29 Gallon Black Tank
- 6 Gallon Gas Water Heater

Excellent unit with light use by non-smokers that has been very well cared for and kept in top operational condition with all servicing and oil changes accomplished within manufacturer's recommendations. All service records available with unit. No accidents, no damage and no repairs with license tag and inspection up to date makes this unit road ready immediately. Unit has a 20,000 Gross Combination Weight Rating (GCWR) and when fully loaded gets between 7 to 10 miles per gallon.

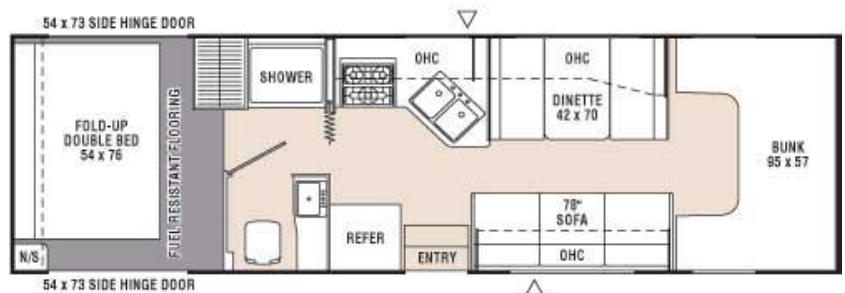
Very comfortable unit for living in an extended period of time or great for those weekend getaways, long trips, or family vacations. Also a perfect unit for dog showing, hunting excursions, or camping trips as the garage can easily hold an ATV, Dirt-bike(s), motorcycle (Harley), hunting or camping equipment, or kennels with dogs. Garage is separate from living quarters and has a door between the garage and the living quarters. The second air condition in the garage provides the appropriate climate control capability to make this unit perfect for an extra bedroom or as a dog hauler.

If you have questions, need more information, additional pictures, or would like to view the unit please contact:

Schuyler Moore at:
 Phone: 817-946-4546 (Mobile) or 888-740-9304 Ext. 1
 Email: SchuylerMoore@ShowDogSynergy.com
 Web: www.ShowDogSynergy.com/ForSale
 Or

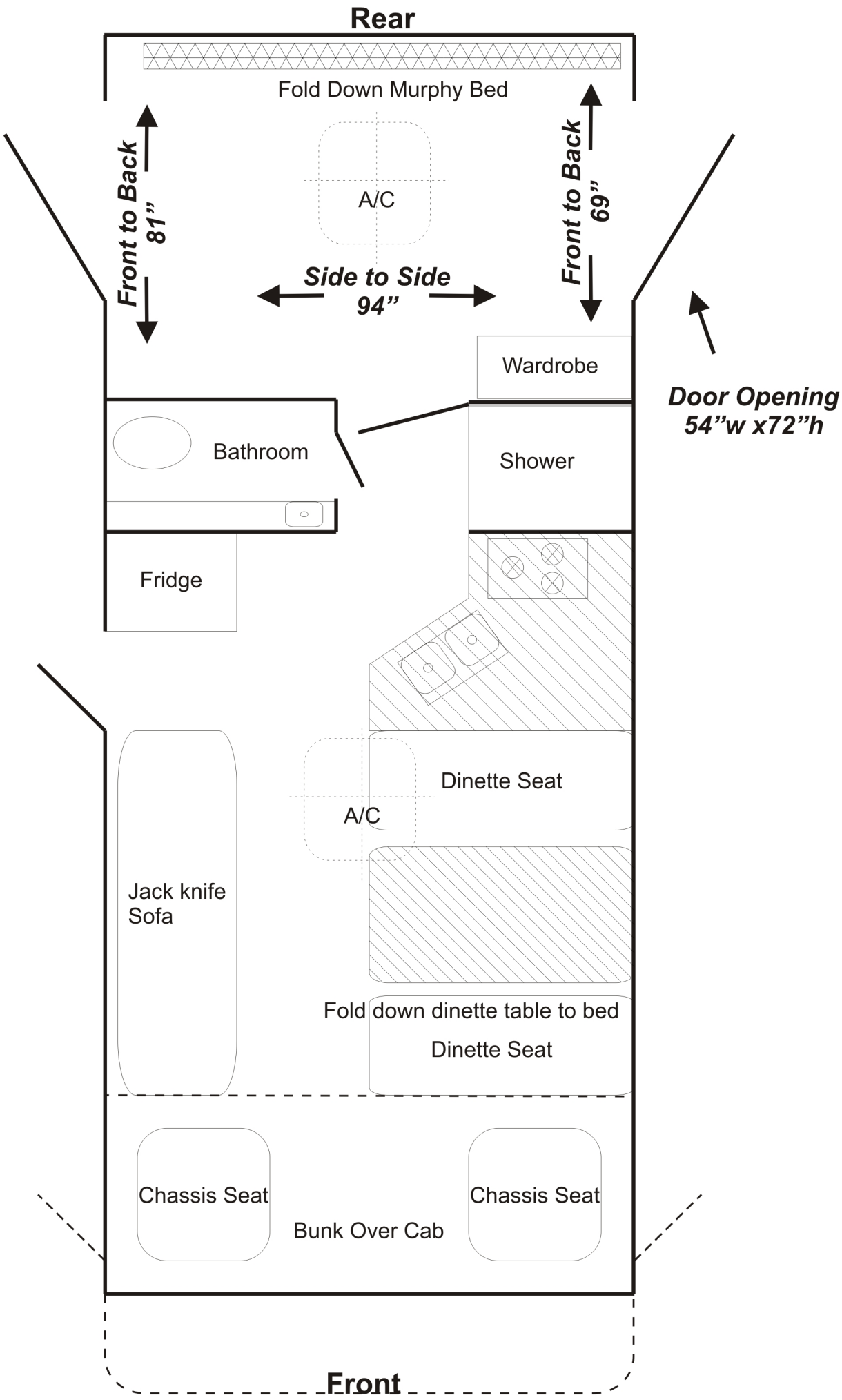


Show Dog Synergy
 P. O. Box 211111
 Bedford, TX 76095
 Phone: 888-740-9304
 Fax: 888-502-6375
 Email: Info@ShowDogSynergy.com



Freedom Ramp & Camp 295 TH

↓ NADA Value Listing Below ↓





The Power of Vehicle Information
NADAguides.com

12/1/2013

2006 Coachmen M-295 TH-FORD

FREEDOM M-295 TH-FORD

www.NADAguides.com Price Report

Values

NADAguides.com Price Report

	Suggested List Price	Low Retail	Average Retail
Base Price	\$71,753	\$23,860	\$28,750
Mileage: 47,222 (+5%)		\$1,193	\$1,438
Options: (change)			
15,000 BTU (Non-Central/Non-Ducted)		\$355	\$425
Furnace (30,000-35,000 BTU)		\$170	\$205
Microwave Oven		\$100	\$120
Gas Grill Cook Top		\$455	\$550
Water Heater 6 Gallon Gas/Elec.		\$80	\$95
23" Flatscreen TV		\$890	\$1,075
AM/FM/CD Stereo		\$130	\$155
4 KW Gas		\$980	\$1,180
Stabilizer Jacks-Crank Down (Each)		\$135	\$165
Aluminum RV Wheels (Set of 4)		\$680	\$820
Awning 10' - 12' (Each)		\$255	\$305
Cruise Control		\$55	\$65
Driver Side Door		\$240	\$290
Driver Side Door W/ Power Window		\$280	\$340
LPG Gas/Smoke Detector		\$45	\$55

Power Roof Vent		\$85	\$105
Skylight		\$110	\$130
Spot Light (Remote)		\$110	\$130
Tilt Wheel		\$55	\$65
Trailer Hitch		\$60	\$75
Vinyl Graphics		\$1,060	\$1,275
TOTAL PRICE:	\$71,753	\$31,383	\$37,813

Standard Equipment Details

RV Type:	Motorhome
Fuel Type:	Gasoline
Self-Contained:	Yes
Slides:	None
Floor Plan:	Rear Bathroom/Garage

Manufacturer note:

MOTORHOMES - From 1995 to current, prices include 3-burner range, microwave, A/C, spare tire kit, tow hitch and awning.

Year note:

Prices reflect fully equipped units. Do not add optional equipment to Concord and Leprechaun. Elite, Cross Country, Epic, Aurora do not include washer/dryer. If included, add hydraulic leveling jacks to Mirada 300QB, cabinetry upgrade to Elite, 2nd A/C to Cross Country SE, and cabover entertainment center to Freedom 314, Santara, & Frelander.

Value Explanations

Prices shown are retail consumer values and to be considered as selling prices. Trade-in values are to be determined by local dealers and are generally lower than values shown.

Suggested List — The value listed reflects the approximate price of the unit when it is brand new. The prices listed are furnished by the manufacturer and are assumed to be correct. The list price does not include freight charges.

Low Retail Value — A low retail unit may have extensive wear and tear. Body parts may have dents and blemishes. The buyer can expect to invest in cosmetic and/or mechanical work. This vehicle should be in safe running order. Low retail vehicles usually are not found on dealer lots. **Low retail is not a trade-in value.**

Average Retail Value — An average retail vehicle should be clean and without glaring defects. Tires and glass should be in good condition. The paint should match and have a good finish. The interior should have wear in relation to the age of the vehicle. Carpet and seat upholstery should be clean, and all power options should work. The mileage should be within the acceptable range for the model year.

An Average Retail vehicle on a dealer lot may include a limited warranty or guarantee, and possibly a current safety and/or emission inspection (where applicable).

Note: Vehicles with low mileage that are in exceptionally good condition can be worth a significantly higher value than the Average Retail price shown.

One of these RV's has a salvage title..
Can you tell Which one?

RV Checks
RV History Reports

100% MONEY BACK GUARANTEE